

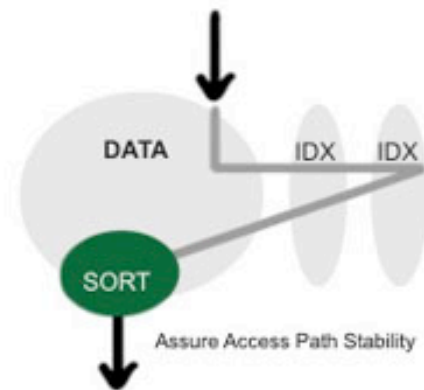


XM4DB2 DSCA DYNAMIC STATEMENT CACHE ANALYZER



Dynamic SQL

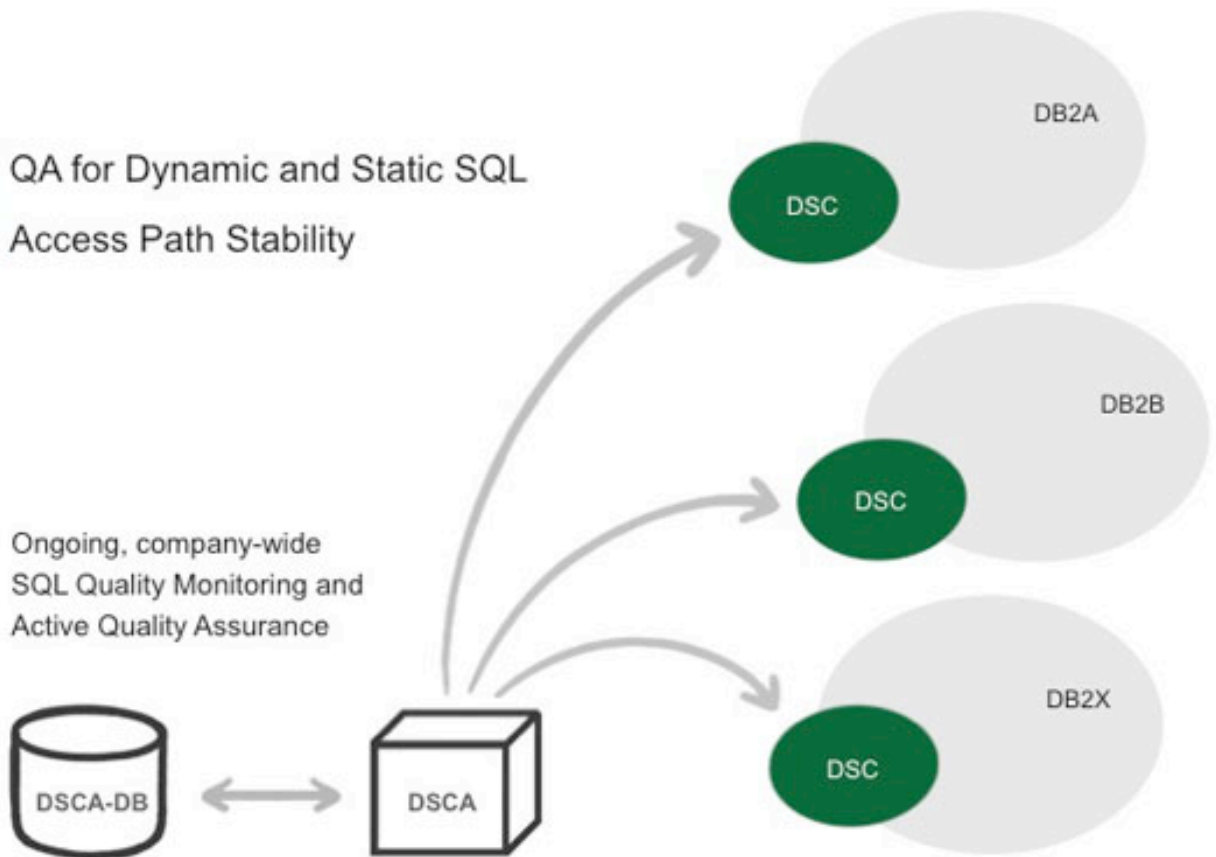
- Quality Monitoring
- Quality Assurance



XM4DB2 EXCEPTION MASTER FOR DB2 SYSTEMS

DSCA

- QA for Dynamic and Static SQL
- Access Path Stability



DSCA

xm4db2 sql analyzer *Release 2.1*

Home
Param
Help
About

SQL WORKLOAD

TOP CATEGORIES

- Dynamic Statement Cache
- CACHE testing
- most often executed Stmt
- executed processed rows

TOP CPU consuming SQL statements

Search SQLCAPY

FILTER: User: Prog:

from: 2010-01-24-00 00 00 to: 2010-09-25-23 59 59

StmtID	Program	Entries	Exec	HASHKEY	CPU	SQLTEXT
FRANK	DSN@EPOL	40	328	3488374318	4827	SELECT SAUSSR, VORNAME, NACHNAME, COUNT(*) AS WINNER FROM KAI.KUNDE WHERE VORNAME LIKE 'A'
FRANK	DSN@EPOL	912	21888	2223952448	3952	SELECT * FROM FRANK.SPASHF198 WHERE QW0198FC = '000'
FRANK	DSN@EPOL	18	741	4818312878	2803	SELECT COUNT(*) FROM KAI.KUNDE
FRANK	DSN@EPOL	80	80	289489714	2090	SELECT * FROM SCVT.KUNDE WHERE VORNAME LIKE 'A SSA' AND VS = 5 WITH
FRANK	DSN@EPOL	24	118	3090784822	1998	SELECT COUNT(*) FROM KAI.KUNDE WHERE FL1 LIKE '7A'
FRANK	DSN@EPOL	2	888	888718228	1878	SELECT DBID, COUNT(*) FROM FRANK.DMSLAX GROUP BY DBID HAVING COUNT(*) > 1000 ORDER BY DBID
FRANK	DSN@EPOL	24	488	21388788	898	SELECT DBID, OBID, GETTRAGE, DISTINCTOP,

Workload

- Top CPU Consumers
- Top Dequeue SQL

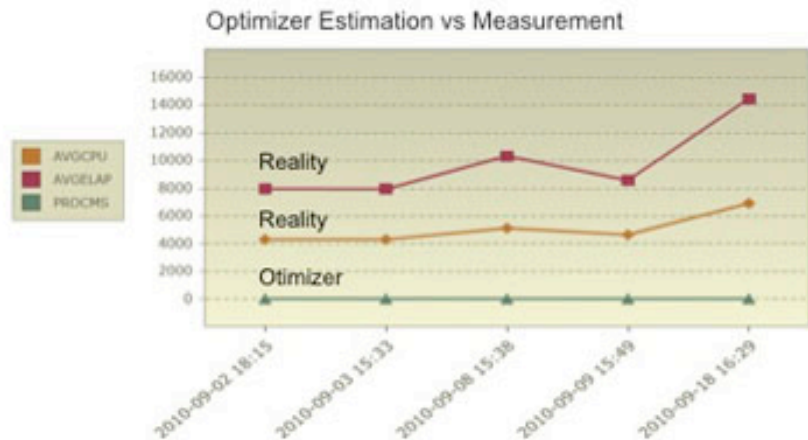


XM4DB2 EXCEPTION MASTER FOR DB2 SYSTEMS

DSCA

Userid	Programe	Entries	Exec	HASHKEY	CPU	SQLTEXT
FRANK	DSN@EP2L	40	320	3406374318	4827	SELECT HAUSNR, VORNAME, NACHNAME , COUNT(*) AS NUMMER FROM KAI.KUNDEN WHERE VORNAME LIKE '% ^
FRANK	DSN@EP2L	912	21856	2223662448	3652	SELECT * FROM FRANK.BPASMFI98 WHERE QW0198FC ^ = '000' ^
FRANK	DSN@EP2L	16	741	4018312975	2803	SELECT COUNT(*) FROM ^ KAI.KUNDEN ^
FRANK	DSN@EP2L	60	92	269489714	2093	SELECT * FROM BCVT.KUNDEN WHERE VORNAME LIKE '% ^ HN%' AND VB = 5 WITH ^
FRANK	DSN@EP2L	24	115	3050794922	1995	SELECT COUNT(*) FROM KAI.KUNDEN WHERE PLZ ^ LIKE '7%' ^
FRANK	DSN@EP2L	2	688	666716226	1575	SELECT DBID, COUNT(*) FROM FRANK.UNLDRX GROUP ^ BY DBID HAVING COUNT(*) > 1000 ORDER BY DBID ^
FRANK	DSN@EP2L	24	455	21366756	599	SELECT DBID, OBID, GETPAGE, DISTINCTGP, ^





Filter based Evaluation and Alerting

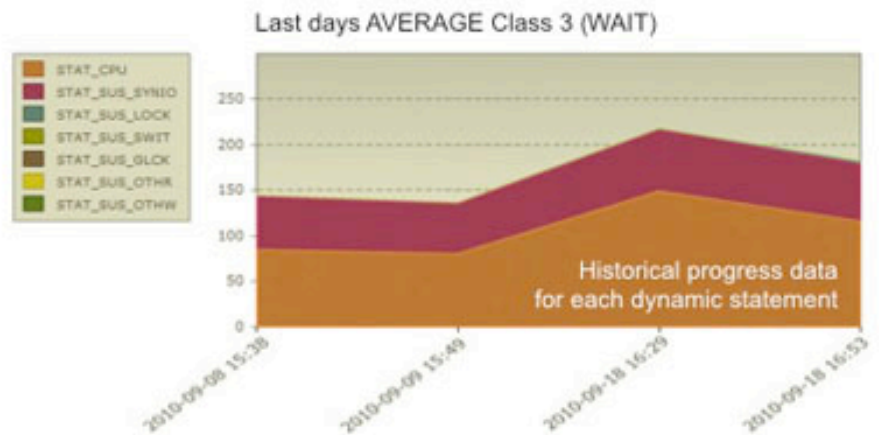
- Inefficient Search due to **missing or inappropriate indexes**
- **DSC Trashing** due to missing parameter markers
- Obsolete **Runstats**, significant deviation Of Optimizer's calculation actual measurement
- Negative **Access Path Change** – static and dynamic

Further Thresholds / Alerts

- Maximum time a user can use per day is exceeded
- Maximum time a program can use per day is exceeded
- Maximum CPU time allowed for one row was exceeded
- Maximum number of sorts per execution was exceeded
- Maximum CPU time per execution was exceeded
- Maximum percentage of lock wait time to elapsed time was exceeded
- Maximum percentage of sync ios to getpages IO was exceeded
- Maximum number of getpages per execution was exceeded

XM4DB2 EXCEPTION MASTER FOR DB2 SYSTEMS

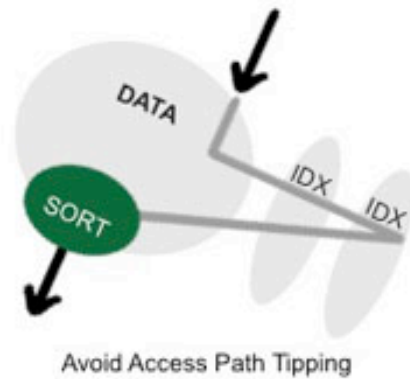
DSCA



Filter based DSCA Reports include:

- List of Top CPU Consumers (users & programs)
- List of Most Cost Intensive Queries
- Lock problem perpetrators
- User Defined Reports

Would you like to test XM4DB2?



XM4DB2 EXCEPTION MASTER FOR DB2 SYSTEMS



Thank you
for your
attention!

Your UBS Hainer Team



XM4DB2 FAST AND EFFICIENT DB2 DATA MIGRATIONS



Learn more about XM4DB2 and our DB2 High-End Product Line at www.ubs-hainer.com or send an email to info@ubs-hainer.com

